

chapter PULSE

EXECUTIVE WOMEN INTERNATIONAL[®]

An Individual Chapter Publication

Chartered in 1992

Huntsville Chapter

January 2007



President's Message

Happy New Year!! We are off to a great start and to a fantastic year of Celebrating in EWI. Your response to our Yes...and Survey was fantastic. Our Board of directors are taking all of your responses to heart and working to include as many as possible this year. We can already check some of the suggestions off our list.

We 1st and foremost want everyone to be and to feel involved in every aspect of EWI. I would like to challenge you to PARTICIPATE in everything, start with your committee and then volunteer for a 2nd. We need you! Also, remember the board meetings are open to EVERY member; we'd love to have you join us. We meet the 2nd Wednesday after the Chapter Meeting, at ADTRAN in the East Tower cafeteria Board room at 1:00pm. They have a wonderful lunchroom and plenty of space for guest to attend, so let me know when you will be attending.

We will be installing a new Membership Director at the January Chapter Meeting; Shelly Graham of COSTCO Wholesalers, we are so looking

forward to having her join the Board. I want to remind you Growth of the Chapter DEPENDS on YOU too! If each of us brings in just ONE new member to EWI we double the size of our Chapter. So I have another challenge for you... make a list of every company you personally do business with and every business with which your company does business. Every week tell FIVE executives/managers about EWI and how joining EWI will benefit them and their business. Then post them for membership and if no objections are received, invite them to come to a Chapter Meeting. You will be rewarded too. We all love prizes right. In addition to the Corporate awards; we are going to have a drawing of our own. For every New Member you bring to our Chapter from NOW to April 3rd 2007, your name will go into a drawing for \$100 CASH!! (Compliments for Mary Kay Cosmetics.) At the April 2nd Chapter Meeting we will draw LIVE for that \$100 CASH, do you want it? The Programs Committee has been working extra hard to get a programs calendar together for us. They are keying in on the "Yes... and" list of programs we want! Just look at some of the things they have already put together. January features "Fitness on the Go" a UFC Firm night; in February we have some personal development with "Self Defense" and both programs will be interactive! In March we will be having our annual Membership Drive featuring Professional Development

from Dale Carnegie. Look for more details on all of these programs in this edition of the PULSE.

Keep Celebrating EWI!

Lynn

CALENDAR OF EVENTS

January

- 9 Chapter Meeting
Adtran, East Tower, South Lobby Entrance
- 17 Board Meeting
Adtran Main Bldg.
1st Floor Cafeteria
Conference Room

February

- 6 Chapter Meeting VBC
"Street Smart" Self Defense
- 14 Board Meeting
Adtran Main Bldg.
1st Floor Cafeteria
Conference Room

March

- 6 Chapter Meeting
Dale Carnegie
Membership Drive
- 14 Board Meeting
Adtran Main Bldg.
1st Floor Cafeteria
Conference Room

IN THIS ISSUE

President's Message	1
Chapter Meeting Notice	2
Member News	3
Approved Budget	5
Evite Instructions	8

EWI Huntsville Chapter Meeting

University Fitness Center Firm Night

ADTRAN East Tower, Main Training Room, South Lobby
Tuesday, January 9th

(See Directions below and Map on page 3)

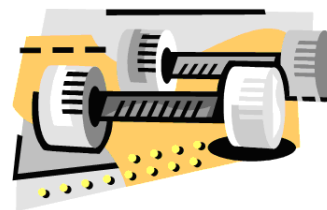
Networking from 5:30 - 6:00. Meeting begins promptly at 6:00

Menu:

Thinly Sliced Pork Tenderloin
served with Jack Daniel's
Mustard Sauce
Tossed Salad
Green Beans
Roasted New potatoes
Rolls
Cheese cake
Iced tea and water

Program:

University Fitness Center will
present "Fitness on the Go"
- fitness exercises you can do
at the office or at home.



Regrets/Guests: Deadline Wednesday,
January 3rd by 5:00pm

Notify: Susan Elder, DeMarle-at Home
via Evite email. See page 8 for more
details.

**Remember that you MUST notify Susan
of your Guests by the Deadline so they
are included**

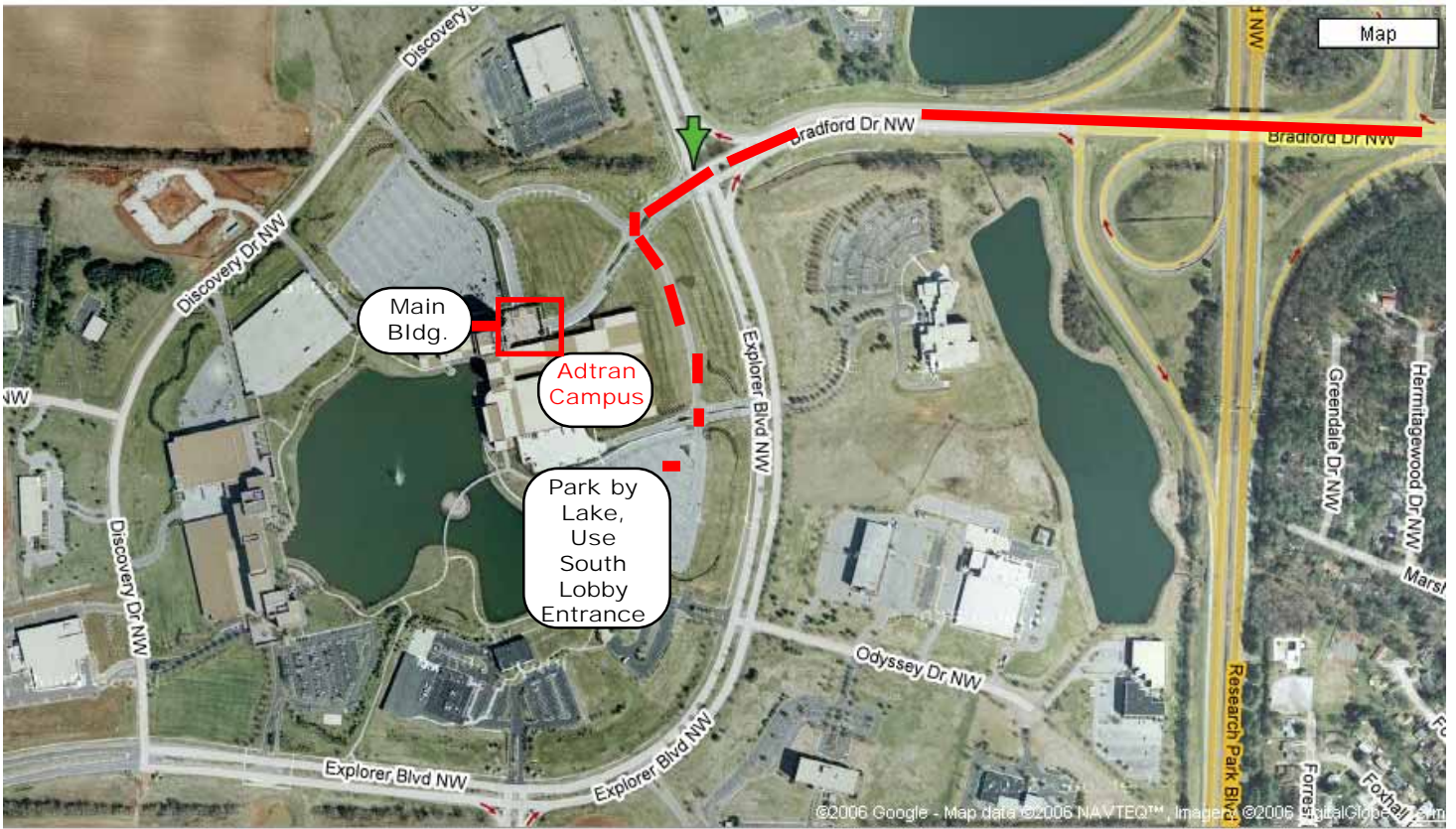
Driving Directions: From Sparkman Drive turn onto
Bradford Blvd. Cross over Research Park Blvd and
keep going straight until you get to the Red Light at
Exploer Drive. Straight ahead of you is the ADTRAN
campus. Go straight through the red light and at
your first left, follow the road around to the parking
lot in front of the lake. You will enter from the East
Tower lobby. Take the stairs (you will see them from
the lobby) up to the the meeting rooms.

Please Remember...

you have a
STANDING Reservation for
ALL EWI Chapter Meetings.
If you cannot attend,
Notify Susan Elder via Evite email
or by phone:
256-922-1701

Failure to **CANCEL** your
Reservation will result in
charges for non-attendance.

Map to January Meeting



Membership Postings

The Membership Committee posts firms for possible membership. Objections to this membership must be received in writing from a member firm executive within ten (10) days of posting. If no objections are received, membership committee will contact the firm(s) for membership.

Postings:

Firm: Southern Living at Home

Rep & Exec: Melynda Ponder

Major: Consumer Merchandising

Minor: Specialty Retailing/Arts & Crafts

Installments:

Shelly Graham will be installed as the new Membership Director during our January meeting.

Direct questions/objections to Lynn Moore by email at lmoore33@knology.net. If you want to nominate a new member firm, visit the website or contact Allison for a referral form.

Still Looking.....

Nominations are still being accepted for executives to judge scholarship applications and interview the scholarship finalist. Deadline for nominations is January 15th. The judging will take place in April and will require approximately 4 hours of your executive's time. Please contact Lanita Carter with questions or nominations.

Sergeant-At-Arms Membership & December Meeting Attendance Report

Chapter Membership:

Member Firms:	61
Member Firm Representatives:	64
Sustaining Members:	1
Life Members:	2
Transitional Members:	0
Firms Not Represented by Reps:	7
Total Representatives:	67

Meeting Attendance:

Firms Represented by Reps:	27
Firms Not Represented:	36
Firms Represented by Guests:	1
Percentage of Firms Present:	44%
Representatives Present:	30
Guest Representatives Present:	1
Sustaining Members Present:	0
Life Members Present:	0
Transitional Members Present:	0
Total Members Present:	31
Percentage of Members Present:	47%
Guests Present:	2
Total Attendance:	33

On a Personal Note

We Would like to Congratulate **Dawn Mueller** on being selected as the **Huntsville Chamber of Commerce "Ambassador of the Year"**. Great Job Dawn!

B'Lisa King, sales manager at **Huntsville Embassy Suites Hotel and Spa**, has been selected as a **"Spirit of Embassy Award" winner**. It is the highest honor for Embassy Suites team members. King joined Embassy Suites in Novemer, 2005, and has been a part of the Hilton family of hotels for nine years. Congratulations!

New Member Spotlight

**Sandi Henderson, Marketing Coordinator -
Crestwood Therapy Services and Sports Care,
Crestwood Medical Center**

Sandi is a Medical Technologist with a degree in Medical Laboratory Science and a Minor in Psychology from East Tennessee State University. Sandi has over 25 years experience ranging from bench technologist to national marketing coordinator. She has been with Crestwood Medical Center for three months.

As Marketing Coordinator she provides information and education to physicians and other health care professionals about the availability of inpatient and outpatient health care services provided by Crestwood. Her primary marketing focus is Therapy Services and Sports Care, which includes Physical Therapy, Occupational Therapy, Speech Language Pathology and Orthopedic Massage.

Sandi has a special interest in increasing the availability of health care services for individuals without insurance or funds to pay for them.

Her favorite hobby is flying! She is a general aviation pilot currently flying a Cessna 150/150

YOU GO GIRL!!



2007 Professional Development News

EWI Partners with Dale Carnegie

We are excited to announce a partnership with **Dale Carnegie** for the delivery of a 2007 web seminar series. These web seminars will be conducted on a quarterly basis. The exact dates and content are currently being developed. Details will be announced soon.

Academy of Leadership on Tour

The City of Chattanooga will be the location for our pilot **2007 Academy of Leadership on Tour**. **The date: Saturday, March 31, 2007.** Modules offered at the event will include: "Professional and Volunteer Leadership: Thinking Like a Genius" (Module 1), "The Power of the Diverse Communicator" (Module 2), and "Leadership: The Power of Relationships" (Module 3). Registration will be offered to EWI member firms and their employees as well as non-member firms, educational institutions, and the public at large.

SHARE YOUR NEWS!

Send submissions to:

Cindy Miller, Publications Director

Phone: 256.532.3874

E-mail: cindy@fusiononline.com

Website: www.ewihsv.org

DON'T FORGET...

Please remember to get your EWI Dues to Libby by Jan 15th.

Forms of payment accepted are: Cash, check, & **now CREDIT Cards.**

**Business / Career / Development Program
2007 Budget**

INCOME

2007

CORPORATE Renewed firm assessments		\$ 2,320.00
New member assessments		\$ 1,380.00
United Way contributions		\$ -
Other contributions: EWTC 2006 Transfer to BC/D/P from General Operating		\$ 4,500.00
Chapter transfers to B/C/DP		\$ 1,975.00
Condolence transfers		\$ 100.00
Interest - Regions checking		\$ 15.00
Self-funding account earnings and/or losses from investments with Wachovia Securities		\$ 1,500.00
Reading Rally		\$ 500.00
Wachovia Volunteer Grants Program		\$ 200.00
Ways and Means EWTC 2007		\$ 10,000.00
Total Receipts		<u>\$ 22,490.00</u>

EXPENSES

2007

Renewed corporate assessments		\$ 2,320.00
New corporate assessments		\$ 920.00
Dinners and meetings		\$ 180.00
Scholarship Banquet		
Judges' gifts		-
Other - Misc	\$ 250.00	
Total Banquet Expenses		\$ 250.00
B/C/DP Scholarships to be paid		\$ 3,000.00
Reading Rally		\$ 350.00
Leadership Conference and Annual Meeting (LCAM)		
Registration Fee - President's Caucus	\$ 300.00	
Miscellaneous Expenses	\$ 50.00	
Airfare for chapter representatives	\$ 1,750.00	
Hotel	\$ 2,400.00	
Registration Fee	\$ 3,000.00	
Delegate Fees	\$ 200.00	
Academy of Leadership Module One	\$ 350.00	
Total LCAM Expenses		\$ 8,050.00
Total Expenses		<u>\$ 15,070.00</u>
Addition to Reserve		<u>\$ 7,420.00</u>

**2007 Budget
General Operating Income**

INCOME

2007

Annual Dues and Corporate Assessments		
Renewed member firms	\$ 14,500.00	
Sustaining members	\$ 85.00	
New member firms	\$ 5,750.00	
Honorary Life Members	\$ 100.00	
Admission fees	\$ 1,575.00	
Total Annual Dues and Corporate Assessments		\$ 22,010.00
Montly Meeting Dues		\$ 13,200.00
Ways and Means Fundraiser(s)	\$ 4,000.00	
Executive Women of Tomorrow Conference (EWTC)	\$ 10,000.00	
Total Ways & Means Income		\$ 14,000.00
Executive Luncheon		\$ 3,000.00
Interest on Checking / Savings		\$ 25.00
Total Income		\$ 52,235.00

Executive Women International
Huntsville Chapter

2007 Budget
General Operating Expenses

OPERATING EXPENSES **2007**

Corporate Assessments		
Renewed Firms	\$ 7,250.00	
New Member Firms	\$ 2,875.00	
Transfers to B/C/DP	\$ 3,000.00	
Admission Fees	\$ 1,050.00	
Total Corporate Assessments		\$ 14,175.00
Meetings		\$ 13,200.00
Chapter Transfers to B/C/DP		\$ 1,600.00
Membership Committee		\$ 1,500.00
Executive Function:		
Meals, printing, postage, etc.	\$ 2,500.00	
Entertainment program/Gifts	\$ 500.00	
Total Executive Function		\$ 3,000.00
Program:		
Speaker Fees	\$ 1,500.00	
Speakers' Meals	\$ 100.00	
VIP Mini Trophies	\$ 75.00	
Miscellaneous Expenses	\$ 50.00	
Total Program		\$ 1,725.00
Leadership Conference & Annual Meeting (LCAM), Houston, TX		
Leadership Module Fee	\$ 175.00	
Chapter Souvenir Pins / Stickers	\$ 100.00	
Miscellaneous Expenses	\$ 50.00	
Total LCAM		\$ 325.00
Traveling Academy of Leadership (TAOL)		\$ 750.00
Board Retreat		\$ 500.00
Liability Insurance:		
Directors, Officers and General		\$ 200.00
Other Expenses:		
Condolence Transfers		\$ 100.00
Treasurer's Bonds		\$ 310.00
President's Pin		\$ 215.00
Chapter Supplies		\$ 150.00
Publications		\$ 50.00
Historian		\$ 150.00
Accounting Compilation		\$ 750.00
Website		\$ 150.00
Ways & Means		
Ways and Means Fundraisers	\$ 250.00	
Executive Women of Tomorrow Conference (EWTC)	\$ 2,000.00	
EWTC - Sponsorships Transfer to BC/D/P	\$ 10,000.00	
Total Ways and Means		\$ 12,250.00
Total Expenses		\$ 51,100.00
Addition to Reserves		\$ 1,135.00

Who We Are



MISSION

Executive Women International is an organization, which brings together key individuals

from diverse businesses for the purpose of:

- ① Promoting member firms
- ② Enhancing personal and professional development
- ③ Encouraging community involvement

VISION

"The Leading Connection for Business Professionals"

Huntsville Chapter Member Firms

AAA-Alabama ♦ ADTRAN, Inc.
Advanced Engineering & Planning Corporation (AEPCO)
AIDS Action Coalition (Davis Clinic)
ALL CLEAN Carpet & Upholstery ♦ Armstrong Relocation
Balch & Bingham LLP ♦ Barak, LLC
Bill Ward/Doris Sisk Real Estate Team
Clementine's Catering ♦ COLSA Corporation ♦
Corr Wireless ♦ COSTCO Wholesale
Crestwood Medical Center ♦ Curves
Dale Carnegie Training ♦ Demarle at Home ♦ Doncaster
Eagle Collision Center ♦ Embassy Suites
Enterprise Rent-A-Car ♦ Enterprise Rent-A-Truck
Expo Displays ♦ The Eye Center ♦ Fountain of Youth
Girl Scouts of North Alabama ♦ Heather Bookout Photography
Holiday Inn ♦ Huntsville Botanical Garden
Huntsville Chamber of Commerce ♦ Huntsville Utilities
Intuitive Research & Technology Corporation
ITC DeltaCom, Inc. ♦ J.R. Enterprises
Junior Achievement of North Alabama ♦ Madison Drug
Madison Square Chrysler Jeep, Inc. ♦ Mary Kay Cosmetics
Media Fusion, Inc. ♦ N & L Enterprises, Inc.
Northwestern Mutual Financial Network
Organization of Small Business Owners (OSBO)
The Orthopaedic Center ♦ Parisian
Publix Super Markets, Inc. ♦ Regions Bank ♦ Renasant Bank
Science Applications International Corporation (SAIC)
Snelling Personnel Services ♦ State Farm Insurance
Swafford Jewelers, Inc. ♦ Tastefully Simple
Tecolote Research, Inc. ♦ Theresa's Sewing Workroom
The Perfect Gift ♦ UAB School of Medicine, Huntsville Campus
University Fitness Center
The University of Alabama in Huntsville ♦ Von Braun Center
WHNT NewsChannel 19 ♦ Wachovia Securities
Wiregrass Hospice ♦ Woody Anderson Ford

Officers & Directors

PRESIDENT

Lynn Moore, Mary Kay Cosmetics
lmoore33@knology.net
256-830-5278

VICE PRESIDENT / PRESIDENT ELECT

Pam Holtzclaw, Wachovia Securities
pamela.holtzclaw@wachoviasec.com
256-564-6420

SECRETARY

Kathy Walton, Snelling Personnel Services
kwalton@snellinghsv.com
256-382-4000

TREASURER

Libby Neveu, Tecolote Research
lbnvue@knology.net
245-955-1291

SERGEANT-AT-ARMS

Susan Elder, DeMarle-at-Home
susan.elder@knology.net
256-922-1701

MEMBERSHIP DIRECTOR

Open

PROGRAM DIRECTOR

Abigail Rizzardi, Corr Wireless
arizzardi@corrwireless.net
256-631-5000

PUBLICATIONS DIRECTOR

Cindy Miller, Media Fusion Inc.
cindy@fusiononline.com
256-532-874

WAYS & MEANS DIRECTOR

Dawn Mueller, The Perfect Gift
theperfectgift@bellsouth.net
256-682-9526

DIRECTOR-AT-LARGE

Charlotte Dawson, Armstrong Relocation
cdawson@goarmstrong.com
256-772-6664

ADVISOR

Jennifer Wellman, Publix Supermarkets
Jjw7804@aol.com
256-650-2390

Sustaining Member:
Sharron Abernethy

Honorary Life Members:
Rhonda Gray, Charlene Little

EWI Chapter Meeting Reminder Notices go Evite!

RSVP/Regrets and RSVP/Guests will now be gathered via Evite, a web-based invitation program.

You will receive an email from Susan Elder(info@evite.com).

Open the email and click on the button that says "View Evite Invitation".

The invitation will have an area "Will You Attend?". Please click the following:

- Yes – If you ARE attending.
- No – If you ARE NOT attending. If you cannot attend, please cancel your reservation so that you will not be charged the \$20 dinner dues.
- Maybe – Please DO NOT USE.
- Add a Comment – If you have a guest attending, please provide the correct spelling of your guest's name, their position, company name and who will be paying for their dinner dues.
- Total Guests ____ (incl. you) – Please use if you are inviting a guest. (It will default to 1.)

Please make all RSVP communications through Evite rather than through my email address, susan.elder@knology.net.

Feel free to email or call me with questions on how to use Evite.

Publication Guidelines: The Huntsville edition of the *Pulse* is published by and for Executive Women International. Our mission is to deliver accurate and professional information about our organization, members, and their firms. Deadline for submission of articles or announcements for the Newsletter is the Thursday following the monthly EWI Huntsville Chapter meeting. Submissions should be presented in MS Word or compatible file formats. All submitted information or news related items are subject to editing for grammar and space.

EXECUTIVE WOMEN INTERNATIONAL®

Corporate Office
515 South 700 East, Suite 2A
Salt Lake City, UT 84102-2801

Phone 801.355.2800
Fax 801.355.2852
Website:www.executivewomen.org,
Email:ewi@executivewomen.org

Huntsville Chapter
PO Box 51
Huntsville, AL 35804-0051
www.ewihsv.org